



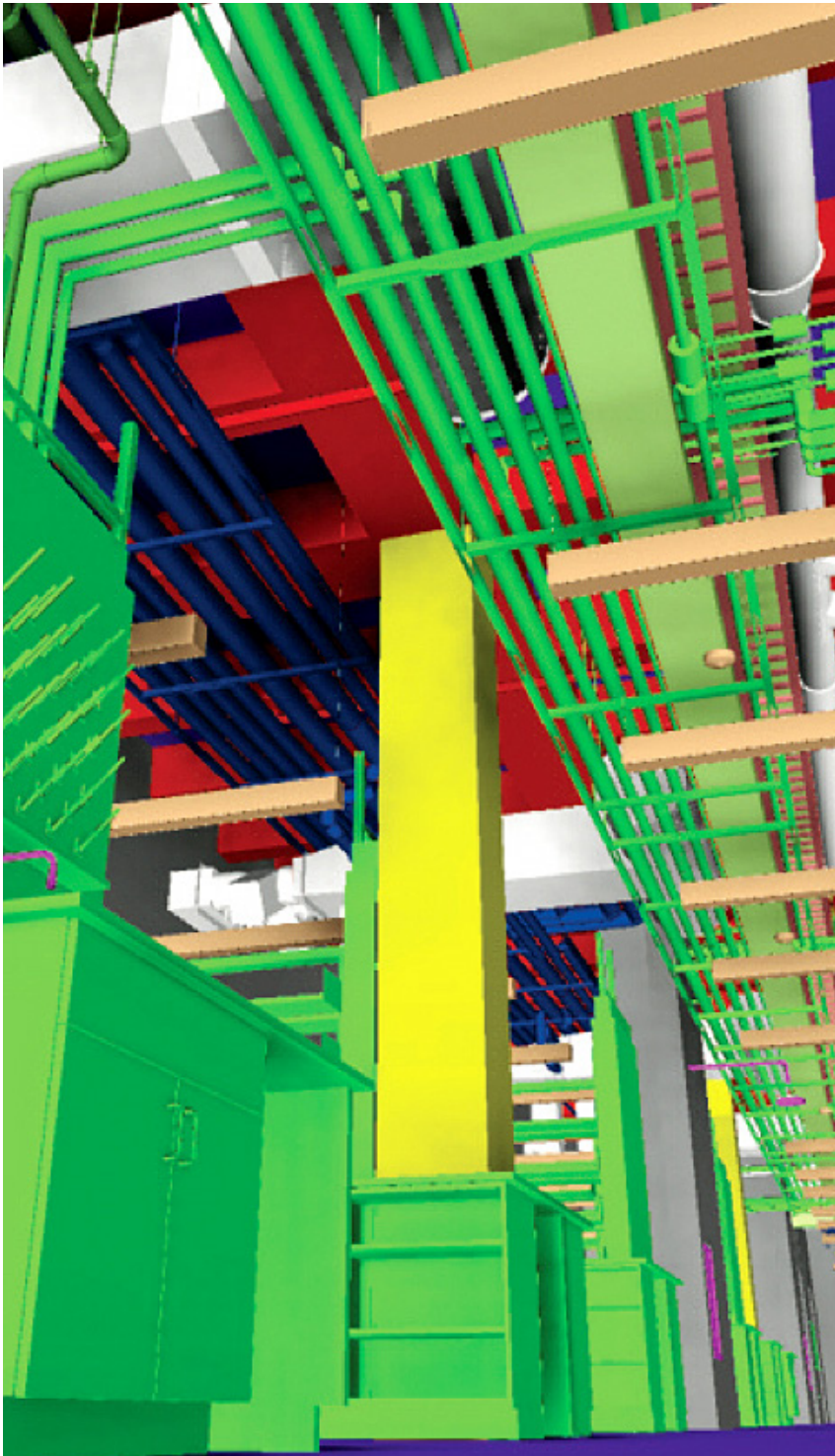
SCAN TO BIM //

BUILDING INFORMATION MODELING (BIM)

Create the most reliable foundation for your program when you integrate SAM's precise high-definition 3D laser scanning services into your BIM model.

Our advanced technology solutions and skilled staff allow us gather precisely the level of data you need. Whether you're looking to model a space, assess the ability of a design, validate compliance, or create reliable as-built documentation, SAM can help.

sam.biz



The right solution for your unique requirements

SAM's scanning solutions provide exceptionally accurate results from a distance. Clients can utilize our Scan-to-BIM solutions in a host of situations: when they need to create a working model of difficult-to-access areas, limit impact on operations or tenants within existing facilities, or create trustworthy documentation from which multiple teams can work.

Start with the most complete data

SAM's complete range of 3D laser scanning, and LiDAR solutions allow us to gather data that meets any programs's needs and budget. We use the state-of-the-art laser scanning technology in combination with other tools to eliminate the need for multiple site visits. Spherical cameras and video technologies can supplement your data with immersive context.

Our commitment to quality doesn't stop there. SAM prioritizes quality control in its data processing. In fact, many of our clients turn to SAM to review data collected by other parties to validate compliance. All BIM work is done in-house by SAM's skilled AutoCAD and Revit professionals. The SAM GeoPortal provides access to your data and allows it to be shared across trades, saving time by providing a single source of truth from which your design, engineering, and infrastructure partners can work.

Key Services:

- Architectural Design
- Space Planning
- Facilities Management Analysis and Planning
- Square Footage Validation
- Prefabrication Documentation
- Design Document Validation
- Building Component/MEP Location

What differentiates SAM?

SAM has built a reputation as a trusted, knowledgeable, and innovative partner. SAM transforms petabytes of complex spatial data into intelligent insights in a holistic Managed Geospatial Services™ (MGS™) framework. As North America's premiere MGS™ company, SAM provides practical, precise, and high-fidelity solutions designed to enhance decision-making, mitigate risks, achieve strategic objectives, and drive costs out of our client's business. Our vision is to advance spatial data acquisition, improve analysis capabilities, and develop predictive analytics to redefine and transform how infrastructure assets are developed and managed throughout their lifecycles.

REACH OUT TODAY

Want to experience the SAM difference for yourself?

Learn how we can put our resources to work for your next program. Call us toll free at (800) 656-9525 or visit us at sam.biz