



## GAS DISTRIBUTION //

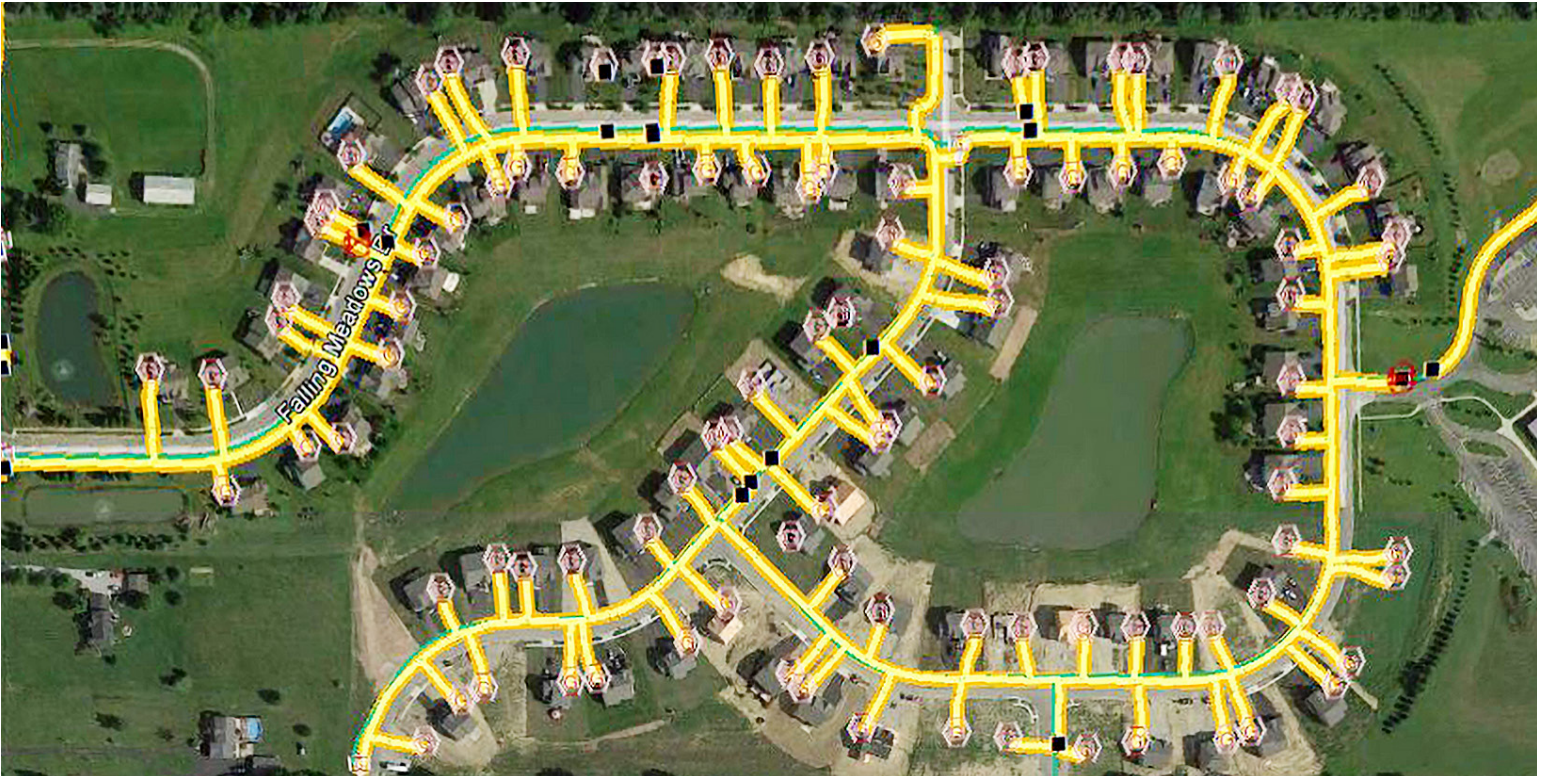
SAM supports the safety and compliance of gas distribution systems across the U.S. with an industry-leading Managed Geospatial Services™ framework. By applying a range of technology solutions to capture accurate data even in the most difficult-to-access locations, we help clients ensure the integrity of gas distribution and transmission assets. SAM's proven damage prevention strategies ensure infrastructure will remain safe and reliable.

In growing population centers, utility infrastructure expansion presents a challenge to understand where existing utilities lie and the integrity of the materials that deliver them. SAM can help you gain a complete picture of your gas and surrounding utility infrastructure. Our innovative technology locates difficult-to-detect lines quickly and with minimal disruption to your customers.

A row of eight blue gas meters is mounted on a wall, connected to a network of yellow gas pipes. The meters are arranged in a horizontal line, and the pipes run both vertically and horizontally. The background is a light-colored, textured wall.

[sam.biz](http://sam.biz)





### **Infrastructure integrity experience**

SAM's nationwide team of licensed engineers, geomatics experts, program managers, and field staff have proven experience helping gas distribution clients achieve better damage rates. Our field teams collect the level of detailed data required to back Local Distribution Companies (LDC) in mapping inventory and planning asset and facility maintenance. While our local offices support local work, our national footprint means that we can smoothly manage multi-state programs to speed along your data collection objectives.

Our experts are involved nationally and with locally based 811 damage prevention, utility coordination, and utility commission committees, keeping SAM ahead of all new and existing requirements related to safe gas distribution operations and energy delivery.

### **Our technology is a game-changer**

SAM applies state-of-the-art geomatics, mapping, and geophysical sensing equipment to support accurate location and mapping of all utility assets, and in assessing the condition of that infrastructure.

Whether your facility is above ground or below, SAM can locate it, map it, and deliver data in easily useable formats for every client. We can deploy a combination of solutions, including pipe and cable locators, ground penetrating radar, time domain electromagnetic detectors, acoustic pipe locators, and non-destructive hydro and air vacuum excavation equipment, to develop the most complete picture of your utility infrastructure. Add to this our GIS-formatted mapping solutions, real-time reporting capabilities, and consistent communication, and you will see why SAM's gas distribution clients grow to expect a more intelligent picture of their assets.

### **Discover the SAM Difference**

SAM is an experienced gas distribution solution partner, providing the local field expertise and program experience to ensure LDC program success at every level. Contact SAM today.

## SAM Core Services

Aerial Mapping / Geomatics / GIS / BIM  
Utility Engineering / Engineering Inspection  
MGS™ Solutions

### **REACH OUT TODAY**

Want to experience the SAM difference for yourself?

Learn how we can put our resources to work for your next program. Call us toll free at **(800) 656-9525** or visit us at **sam.biz**