



## ELECTRIC POWER INFRASTRUCTURE //

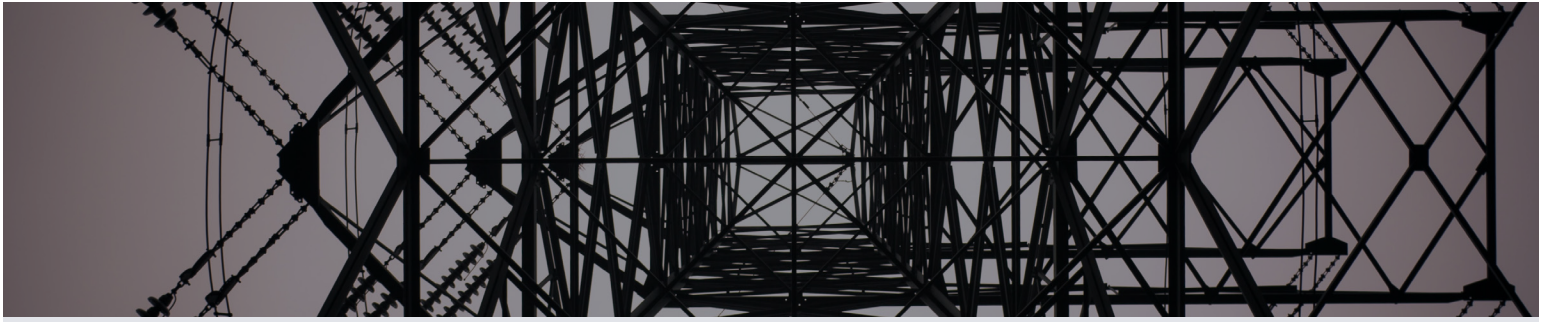
### **A secure foundation for your next electric power generation or delivery program**

SAM's industry-leading geomatics and subsurface utility engineering services lay the foundation for reliable greenfield planning and brownfield upgrades for power generation, transmission, distribution, and substation programs. Our dedicated electric power industry experts deliver advanced technology solutions—and the comprehensive data that clients need to maintain and expand their infrastructure safely and efficiently.

With an ability to deploy and scale rapidly anywhere in the nation, we bring exceptional expertise and flexibility to every engagement.

[sam.biz](https://sam.biz)





### **We deliver the industry's most complete data.**

We invest actively in leading-edge technology, and our developers work alongside industry experts to enhance their tools and produce better solutions for all clients.

Our field crews utilize the latest GPS equipment and ground-based LiDAR scanners to collect massive amounts of aboveground data. Deploying best-in-class aerial LiDAR sensors increases our capabilities for gathering greater point density at a faster scan rate—which means capturing more accurate data, faster. Plus, with our own fixed-wing aircraft, we have superior control over the program schedule and timeline.

In addition, SAM developed an unmanned aerial system inspection program to collect and analyze data—helping utility clients nationwide identify potential failures in their system before they arise.

### **Our data in your preferred software language.**

At SAM, we excel at delivering the data you need, however you prefer it. Every program includes a data review with a SAM expert to address any questions you have or customizations you may need. Our easy-to-use deliverables are designed to be integrated seamlessly into your workflow. We have experience working with a wide array of industry software, as well as our own proprietary software developed to address specific client needs. Our file management platforms make it simple to share files and data with your team. SAM deploys its in-house Subsurface Utility Engineering (SUE) staff with a wide range of geophysical locating equipment to locate and mark existing underground utilities and provide customer-driven deliverables.

We've also developed a proprietary tracking system that provides detailed insight into program efficiencies, helping us to deliver more accurate bids and better jobsite reporting.

### **Proven expertise in the renewable energy market.**

SAM offers a full range of geomatics, utility engineering and infrastructure services to support the renewable energy industry, and our capabilities are aligned with the specific needs of renewable developers. We combine deep local market knowledge, the horsepower of a national firm, and the ability to meet the most demanding program schedules. Those are just a few of the reasons that we have successfully completed over 230 renewable energy programs across 34 states in the past three years.

### **We prioritize security.**

Like our clients in electric power distribution and generation, SAM prioritizes security at every step. We maintain total compliance with the NERC CIP-013-1 standard on supply chain cybersecurity for your protection. Because of our complete in-house processing and data storage capabilities, clients can rest assured that SAM will not use offshore labor at any point during your program.

By working with one fully integrated provider to meet a range of needs, investor-owned utilities, public power, and electric cooperatives benefit from a seamless process—limiting data sharing across multiple contractors.

## **SAM Core Services**

**Aerial Mapping / Geomatics / GIS / BIM  
Utility Engineering / Engineering Inspection  
MGS™ Solutions**

### **REACH OUT TODAY**

**Want to experience the SAM difference for yourself?**

Learn how we can put our resources to work for your next program. Call us toll free at **(800) 656-9525** or visit us at **sam.biz**